

SUPPLY DEPARTMENT



LCDR DAUCHESS
SUPPLY OFFICER



ENS SNIDER
DISBURSING OFFICER



ENS. LONG
ASS'T. SUPPLY OFFICER



SC



BOTTOM ROW—SCHALLY J.E.; SLEETH G.W.; REAGAN Q.E.; JACKSON H.T.; PERKINS W.R.; PILLOW W.E.; GRAVES C.E.
TOP ROW—PUCKETT J.A.; KOCSIS W.E.; POCHE G.L.; SMITH L.C.; SMITH S.P.; PECK M.H.; KUEPKER C.H.; BYNUM J.L.; CARLOCK C.E.; DELA ROSA R.; ENS. LONG.

"THE BEST CHOW AND LOTS OF IT," THAT IS OUR MOTTO. THE COMMISSARY DIVISION OF THE SUPPLY DEPARTMENT HAS HAD ITS GROWING PAINS ALONG WITH THE REST OF THE SHIP SINCE COMMISSIONING BACK IN BREMER-TON, BUT NOW THE GROWING PAINS ARE GONE AND WE HAVE DEVELOPED IN-TO A HARD WORKING TEAM.

THE CRUISE HAS DONE A LOT TO DEVELOP OUR SEA LEGS. THE GALLEY KEYS HAVEN'T BEEN LOST FOR MANY WEEKS NOW. THE BAKER HAS LEARNED TO TURN OUT A GOOD CAKE EVEN WITH ALL THE ROCKING AND ROLLING. THE MESS COOKS NO LONGER HEAD FOR THE LIFE LINES AS SOON AS WE LEAVE PORT. AND THE JACK-OF-THE-DUST CAN NOW ACTUALLY FIND PEACHES WHEN HE GOES TO LOOK FOR THEM.

BESIDES ALL THE HARD WORK WE HAVE HAD SOME GREAT TIMES, EXPECI-ALL IN HAWAII AND WAIKIKI BEACH. OF COURSE OUR BIG DAY OF TRIUMPH WAS THE "POLLYWOG REVOLT". JUST BEFORE CROSSING THE LINE. BUT WE ENDED UP WITH A VERY SORE AFT SECTION AND EXTREMELY SHORT HAIR-CUT AND A TRUSTY SHELLBACK CERTIFICATE.





YOU EAT IT, I DON'T



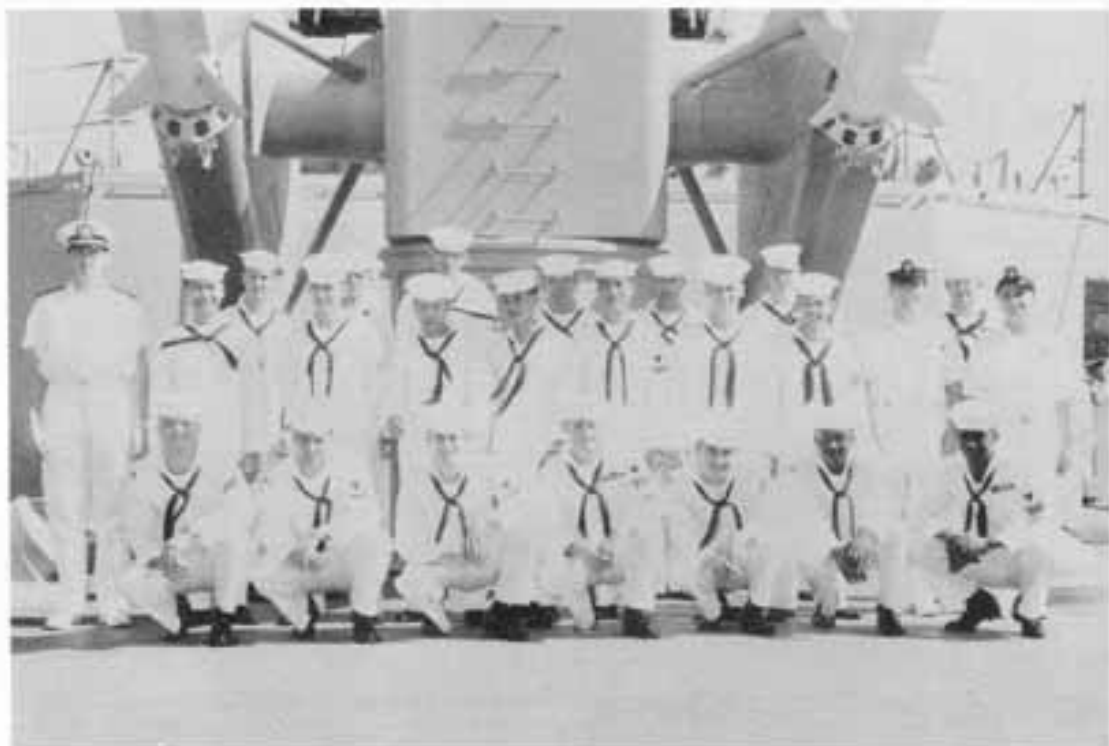
LET'S SAVE THESE FOR US



BEANS, OUR SPECIALTY



SOME MORE PLEASE



BOTTOM ROW-CALLIOTTE R.S.; FITZGERALD R.E.; BOWER, A.D.; KIN-
 NAMON C.E.; GALLEGOS, A.E.; WHITE G.D.; PENN H.F.
 MIDDLE ROW-ENS, SNIDER; TRINIDAD E.A.; TODD A.E.; TRINIDAD
 J.A.; RONQUILLO V.A.; SAMONTE S.A.; CHRISTOPHER R.L.; BAC-
 LIG L.Q.; CANNON T (N); HUBER R.W.
 TOP ROW - MACHON C.A.; SELL I.J.; MC BURNEY W.L.; ANTEL-
 MAN R.D.; HOOGE J.D.; ADAMS, B.M.; DOUDNA D. E.

COMMENCING LONG BEFORE COMMISSIONING, SS DIVISION WAS BUSILY PREPARING FOR THEIR SUPPORTING FUNCTIONS ABOARD THE KING WITH OUTSTANDING ASSISTANCE FROM THEIR SHIPMATES, THE STORE-KEEPERS FOUND THE LOADING OF NEARLY 35,000 DIFFERENT ITEMS A CHALLENGING TASK WHICH MIGHT HAVE BEEN UNSURMOUNTABLE FOR LESSER SHIPS. GETTING THE PARTS ABOARD WAS JUST THE BEGINNING FOR THESE MEN, HOWEVER, AS THE ABILITY TO LOCATE AND ISSUE THEM FROM THEIR 29 ASSORTED STOREROOMS WAS THE REAL TEST. THE SAME VIGOR DEMONSTRATED BEFORE COMMISSIONING CONTINUED AND WE WERE VICTORIOUS.

OUR SHIP'S SERVICE GROUP WAS EQUALLY PREPARING FOR THEIR MISSION AND WHEN THE "KING'S MEN" RECEIVED THEIR CLEAN CLOTHES, THEY KNEW THE LAUNDRY MEN WERE BOTH READY AND ABLE. WITH GREAT ANTICIPATION ALL PERSONNEL LOOKED FORWARD TO THE OPENING OF OUR SHIP'S STORE. THE LONG LINE OF HAPPY CUSTOMERS SPEAK FOR THE SUCCESS OF ITS OPERATION. LAST BUT FAR FROM LEAST OF OUR SHIP'S SERVICEMEN WAS THE BARBER, PERHAPS LACKING THE GLORY OF THE "ROYAL BARBER" ON OUR LINE CRUISE, WE FOUND HIM MUCH MORE TALENTED.

BEDECKED IN THEIR CLEAN WHITE UNIFORMS, THE STEWARDS WERE NOTED BY ALL AS THEY HUSTLED AROUND THE SHIP GIVING ATTENTION TO THE PERSONAL NEEDS OF THE KING'S OFFICERS. THOUGH CONCENTRATED NEAR THE WARDROOM, THE STEWARDS WERE TO BE FOUND IN THE STATE-ROOMS, PROVISIONS STOREROOMS, POST OFFICE, AND LAUNDRY.

THOUGH SMALL IN NUMBERS, ALL THE "KING'S MEN" EAGERLY NOTED THE WORK OF THE DISBURSING PERSONNEL. LONG AWAITED TRAVEL AND PER DIEM PAYMENTS MADE SOME MIGHTLY HAPPY FAMILIES AT CHRISTMAS. DURING THE SHAKEDOWN THE INCREASE IN QUARTERS ALLOTMENTS ASSURED THAT OUR "KING'S QUEENS" WOULD BE HAPPY.

AND LASTLY, HOW WOULD THOSE LEAVES AND LIBERTIES HAVE BEEN IF AT FIRST THE DISBURSING CLERKS HAD NOT BEEN WORKING???





TRAVEL CLAIM? COME BACK TOMORROW



DON'T WORRY. IT DOESN'T HURT TO HAVE AN
EAR CUT



SEE? PAY CAN BE FIGURED
EVEN WITH EYES
CLOSED



KEEP MOVING FELLAS



WE DON'T HAVE TO TYPE IT
IT'S HERE SOMEWHERE



ONE FOR YOU, AND ONE FOR ME, O.K.?



IT'S STILL CLEAN, JUST PRESS IT AND DROP
IT IN THE BAG



WOW!! THAT MACHINE PRESSES BY ITSELF



READY, WILLING AND ABLE